

The image features a sunset over the ocean with an offshore oil rig in the distance. The sun is a bright yellow-orange orb on the left side of the horizon, casting a shimmering reflection on the water. The sky is a gradient of orange and yellow. The oil rig is a dark silhouette against the bright sky. The logo for Magnus Cross-Border Corporation is overlaid on the top half of the image. The word 'MAGNUS' is in a large, bold, serif font. The letter 'M' is stylized with a grid pattern overlaid on it. Below 'MAGNUS' is the text 'CROSS-BORDER CORPORATION' in a smaller, all-caps, sans-serif font.

MAGNUS
CROSS-BORDER CORPORATION

Message from the Chairman

We envision a business that has no border. A trade and enterprise in the local and global market that is competitive while largely dependent on our local resources as a means to contribute to our own economy and local employment.



We subscribe to our sense of social responsibility without limiting ourselves to our own boundaries. A business model that is diversified and open where and when the opportunity is viable without sacrifice to our traditional values. We will establish a foothold in the local and international trade of mineral ores and other commodities. We envision that one day we will be a major player with our own mining sites and processing plant that is expedient to our global trade together with the local market demand for consumer and industrial goods.

We strive in a competitive business environment and take up the challenge and have faith on the wisdom of management and the creativity of our dynamic team.

A handwritten signature in black ink, appearing to read 'L. Valenton', written over a faint circular watermark or logo.

LARRY F. VALENTON, CPA
Chief Executive Officer

Our Story

MAGNUS Business Link Corporation was established in December 2012 with its core business on business process outsourcing, professional services, technology based applications, business solutions and business financial consultancy.

With its exposure to the mining and trade industry MBLC evolved into a more diversified and dynamic enterprise continually exploring the potentials of each market.



With an estimated US\$1.4 trillion in mineral reserves, the mining potential of the Philippines is one of the largest in the world. According to the Mines and Geosciences Board, the archipelago is ranked top five in the world for overall mineral reserves, covering an estimated nine million hectares, although less than 2% has received mining permits.

Despite the uncertainty of world prices on mineral ores, MBLC endeavored to venture into the mineral ore trade business and thus, giving birth to its affiliated company, **MAGNUS Cross-Border Corporation**.



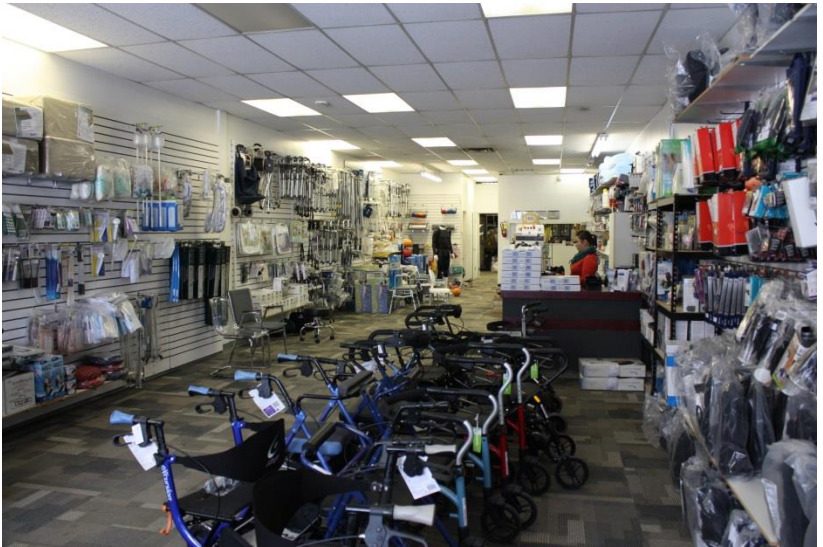
MBLC have set the ground works for MCBC with mineral ore trade as its flagship. Immediately after its launching, MCBC is quickly establishing itself as a major alternative to the corporate giants who dominate the industry. It is imperative that we don't meet them head-on. Though we also cater to nickel ore supply (a staple in the Philippine mining industry), MCBC has set its sights in becoming a major supplier of copper ore and copper concentrate.

To date, we supply the following mineral ores:

1. **Nickel ore** (0.9% to 1.8%)
2. **Copper ore** (6% to 16%)
3. **Copper concentrate** (20%>)
4. **Iron ore** (60%>)
5. **Chrome ore** (42%>)

Complementing our core products (mineral ores) for our local trade for diverse industries are the following:

1. **Agri-Products (Sugar, rice, etc.)**
2. **Cement**
3. **Rocks, sand, and aggregates**
4. **Automotive Diesel Oil**
5. **Alternative/Renewable Energy**
6. **Industrial Equipments and Supplies**
7. **Medical Supplies**
8. **Consumer goods**



Our Commitment

MAGNUS Cross-Border Corporation is about resource-conscious flexibility on product supply alternatives. Our goal is to allow our customers to be confident in our ability to supply the volume and quality of their product requirement/s and deliver them on time.



- We will develop long-term partnerships with our customers.
- We will consistently meet their expectations with our service and product quality.
- We will work with honesty, integrity and respect at all times.
- We will continuously improve our best practices to maximize environmental and social sustainability.
- We will embrace change and encourage innovation.
- We will seek excellence in everything we do.
- We will respect the environment and the communities within where we operate.

Our Trade Exports

COPPER CONCENTRATE



COPPER ORE



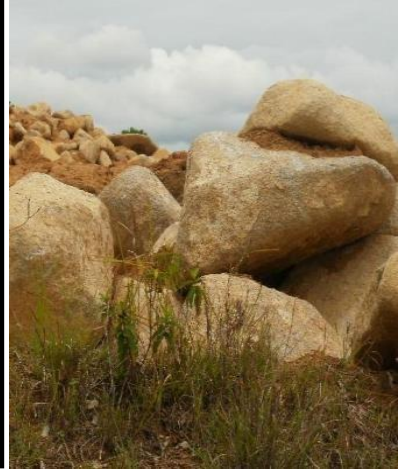
IRON ORE



NICKEL ORE



ARMOUR (MOUNTAIN & RIVER) ROCK



Our Local Trade

PORTLAND CEMENT – TYPE 1



**RECONDITIONED EQUIPMENTS
BACKHOE**



DUMP TRUCK



ALL TERRAIN TRUCK MOUNTED CRANE



Our Events



Our Team



Shaping The Future



Contact Us



Corporate Address : Suite 803 TCI Tower, West Drive,
Kapitoyo, Pasig City, Philippines

Telephone Nos. : +63 470 3598

eMail Address : irenefs.magnuscorp@gmail.com
nicolebello.magnuscorp@gmail.com
lfvalenton.magnuscorp@gmail.com

Map

